

Soft Absorber

FPD-1018 Series



Model Description

FPD - 1018 A15 - SW

① ② ③ ④ ⑤ ⑥

① Series name

② External diameter

③ Stroke

④ Symbols indicating characteristics

A3 : Low-load specifications A15 : Low-load specifications

A5 : Low-load specifications A20 : High-load specifications

⑤ Symbols indicating form

S : S type (Standard)

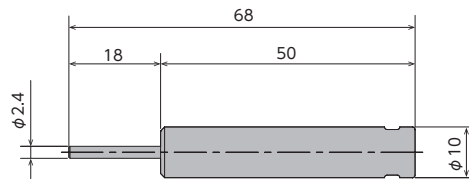
C : C type (Cap)

R : R type (Elastomer cap)

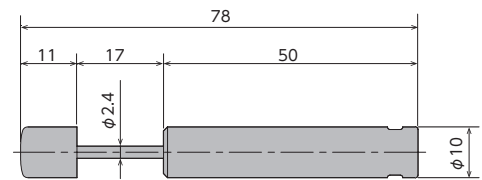
* Please refer to the external dimensions.

⑥ Symbols indicating color W : White

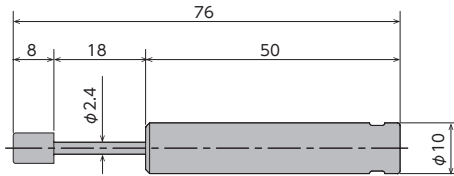
External Dimensions



FPD-1018A□-SW (S type)



FPD-1018A□-RW (R type)



FPD-1018A□-CW (C type)

Specifications

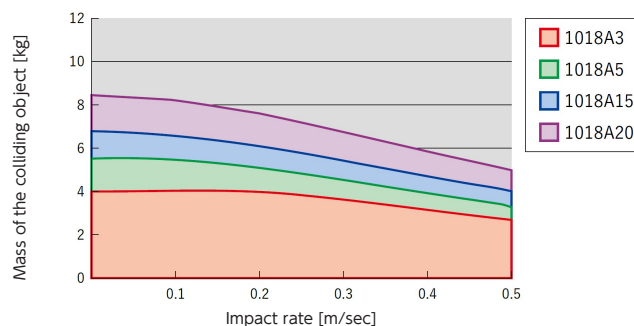
* For the motion-time of each load, please see the next page.

MODEL	Max absorption energy J(kgf · m)	Speed range m/s	Cylinder cap color
FPD-1018A3	0.8(0.08)	0.5 or lower	White
FPD-1018A5	1.0(0.10)	0.5 or lower	Blue
FPD-1018A15	1.2(0.12)	0.5 or lower	Brown
FPD-1018A20	1.5(0.15)	0.5 or lower	Gray

Common Specifications

Stroke (S/C type)	mm	18	Mass	g	S type = 6.1, C type = 6.6, R type = 7.3
Stroke (R type)	mm	17	Main unit material		Resin
Recovering power of piston rod	N(kgf)	6(0.6) or lower	Range of operating temperature, degrees °C		5~40

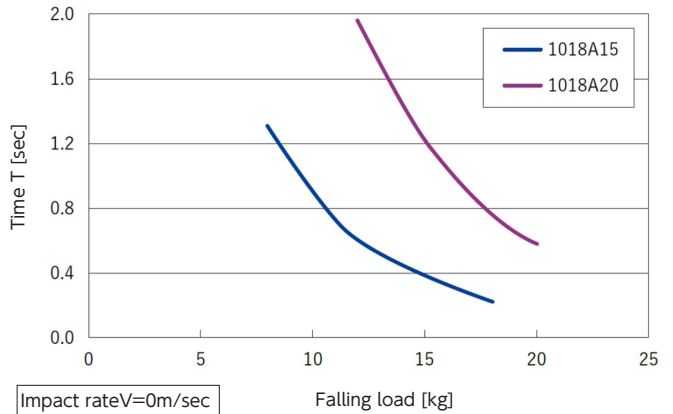
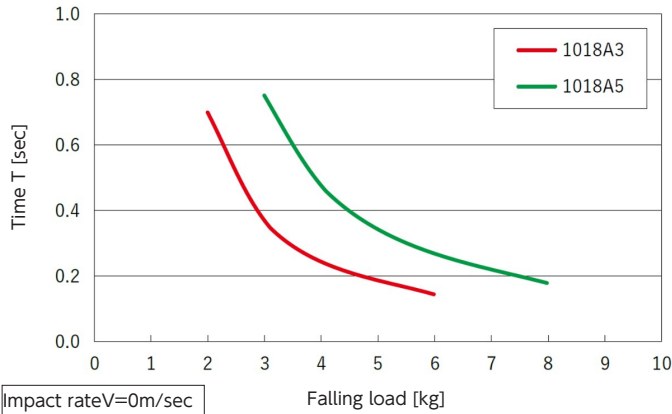
Graph of Impact Rate/Mass of Colliding Object Under the Condition of Free Fall



●Products specification might be changed without notice.

Graph of Operating Time by Load

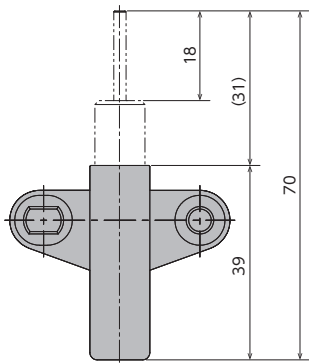
Changes in Operating Time by Load



Optional Parts

OP-200-01B/W

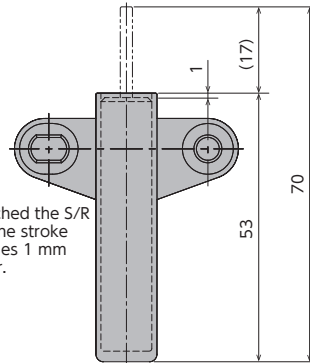
MODEL
OP-200-01B
OP-200-01W



Screw used: M4 (truss screw)
 Recommended tightening torque: 0.5 N·m

OP-200-02B/W

MODEL
OP-200-02B
OP-200-02W

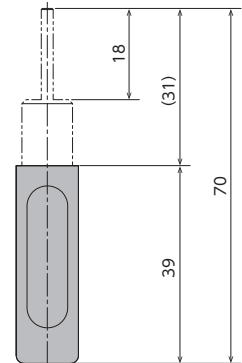


* Attached the S/R type, the stroke becomes 1 mm shorter.

Screw used: M4 (truss screw)
 Recommended tightening torque: 0.5 N·m

OP-200-03B/W

MODEL
OP-200-03B
OP-200-03W

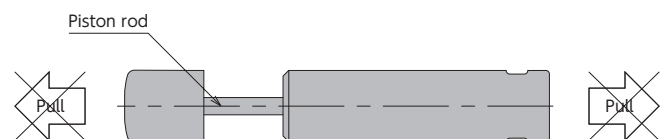


Screw used: M3 (countersunk screw)
 Recommended tightening torque: 0.3 N·m

- The diagram indicates the mounting dimensions of the adaptor for the FPD-1012 series used in combination with the FPD-1018S type.
- For the details of the adaptor specifications, please see the pages of the FPD-1012 series.

Precautions for Use

- * Use with an external stopper.
- * Ensure that sufficient mounting strength is secured for this product.
- * 2 or more of this product can be used in parallel.
- * Do not use this product in a vacuum or a location where it may come in contact with oil.
- * Ensure that an eccentric load is not applied to the soft absorber.
 - S/C/R type ••• Allowable eccentric angle: $\pm 2.5^\circ$ or less
- * Do not pull the piston rod of the soft absorber.



(This will cause air to get inside the soft absorber, causing ineffective stroke, abnormal sounds, and other damage to the soft absorber.)
 ※When the gap between the pressing time and the returning time of the piston rod is large, the durability may be affected. Confirm its performance in an actual machine before use.